



**Your business  
is our business!**



## Belts for the Airport Industry

From the check-in counter  
to the reclaim carousel,  
we handle the baggage!



Helping achieve  
Minimum Connection Time Targets



## Unique industry, unique needs

Around the world, airports are busier than they have ever been. More flights and more passengers are taking off and landing every day, and they are not travelling empty-handed. Passenger baggage is a vital aspect of airport management, and how quickly, safe and accurately it moves around within the airport system will directly influence overall airport efficiency and consumer satisfaction.

From check-in to baggage reclaim, Ammeraal Beltech provides the best belting solutions. Through the unique combination of market expertise, experience and engineering know-how, we are able to develop the right belt with the highest availability, reliability, lowest power consumption, and lowest operating costs for airports of all sizes.

**ONE STOP belt** local stock  
quick belt replacement  
short delivery time  
24/7 service

Member of:



Airports and air travel thrive on new ideas and new technology, and so does Ammeraal Beltech. Our belts come in many different styles and of course, they meet the stringent industry demands for their applications.

Special features for airport use include:

- An Energy Saving Concept that in combination with selected belts can achieve a significant reduction in power consumption.
- Low noise for a quiet, pleasant passenger area and environmentally friendly working conditions.
- Flame retardant and antistatic to minimize (fire) hazards.
- Impact resistant and high friction for gentle transport and to avoid damages to baggage.
- Abrasion resistant, temperature resistant and weather-proof for reliable operation in various, even harsh, circumstances.



### Energy Saving Concept

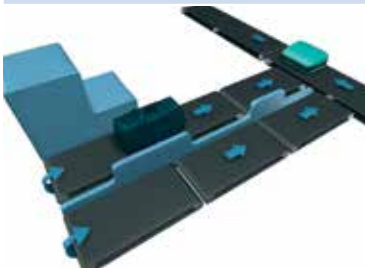
*Less power consumption  
Lower operating costs  
Efficient and safe operation*

System design factors of Ammeraal Beltech's Energy Saving Concept assist in providing the best energy reducing solution for airport conveyors.



## ● Reliable, Safe baggage transport ● Impact Res

### Check-in and Weighing

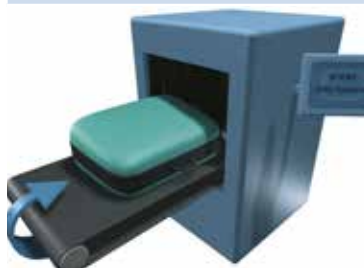


It all begins here where baggage is weighed, tagged and then transported.



Our belts are **strong** with proven reliability and **feature profiles** designed for the transport of roller-equipped suitcases.

### Screening and X-ray Scanning



One of the most vital steps in airport and aviation safety.



Ammeraal Beltech's widely used **Ropanyl** belts are the perfect never-fail solution for baggage screening applications.

### Sorting Cross belt sorters



Baggage sorting involves high-speed conveyors equipped with cross-belt and tilt-tray sorters to minimize transfer times.



We offer extremely reliable **flame retardant** belts with extra **long-wearing** top covers for sorting applications.



## Instant, Low Noise and Flame Retardant solutions ●

### Sorting – Tray systems

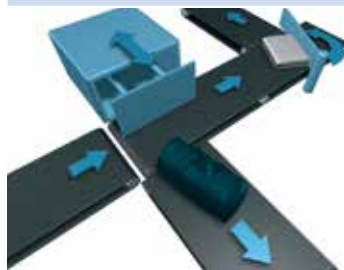


Airport systems demand high-tech intelligent design, and our belts deliver. Efficiency and innovation are the hallmarks of our belting solutions.



We offer special **belt coatings** to guarantee the firmest grip and the smoothest possible transport and transfers.

### Sorting – Pushers and dividers



Pullers, pushers, merging facilities – all these belts have special requirements.



Our **high-impact-resistant** Flexam belts are able to withstand heavy shock loads.

### Transportation – Curve, Merge and Take-Away



Strong curved belts are required and must be able to handle heavy loads.

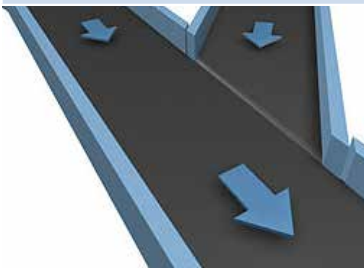


We offer **low noise** belts capable of highspeed power turns. Our extra-strong curve belts can handle loads up to **250 kg**.



● Reduced Energy Costs ● Less Downtime ●

**Transportation – Merge and Take-away**



Belt junctions require narrow tolerances and small drum diameters. Our 45° angled merge belts fit the job and are high temperature resistant.



Our belts offer very **low friction** bottom covers, very high lateral stability and outstanding abrasion resistance.

**Loading/Unloading – Belly Loading**

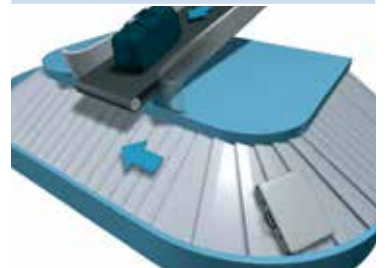


Weather and temperature-resistant conveyor belts with excellent grip and tracking properties in bi-directional conveying for loading and unloading aircraft.



Our belly loading belts meet these requirements and have been designed to meet **health and safety standards**.

**Arrivals Claim**



At the final stage of the BHS journey, baggage is delivered to passengers. For transiting passengers, a system is in place to expedite onward baggage transfer.



**Reliability and innovation** combine to bring the baggage to its final destination safely and on time.

For airports, there is nothing more important than movement – it's their reason for being. At Ammeraal Beltech, it's our mission too. Like our belts, we never stop and we deliver every time – which makes us your perfect Baggage Handling System partner.



Rydell Industrial (Belting) Co

[www.rydell.com.au](http://www.rydell.com.au)

**VICTORIA**  
**VICTORIA**  
**NEW SOUTH WALES**  
**QUEENSLAND**  
**QUEENSLAND**  
**SOUTH AUSTRALIA**  
**WESTERN AUSTRALIA**

**HEAD OFFICE** 148-150 Cochranes Road Moorabbin 3189 Victoria  
**BRANCH** 148-150 Cochranes Road Moorabbin 3189 Victoria  
**BRANCH** Factory 16/24 Kanowna Street Hastings 3915 Victoria  
**BRANCH** 22 Binney Road Kings Park 2148 New South Wales  
**BRANCH** 12 Machinery Street Darra 4076 Queensland  
**BRANCH** 8 Machinery Street Darra 4076 Queensland  
**BRANCH** 17-19 Churchill Road North Dry Creek 5094 Sth Aust  
**BRANCH** Unit 3/75 Crocker Drive Malaga 6090 West Aust

Phone (03) 9555 7922  
Phone (03) 9555-7922  
Phone (03) 5979 4447  
Phone (02) 9831 7300  
Phone (07) 3375 6211  
Phone (07) 3375 6211  
Phone (08) 8162 9922  
Phone (08) 9249 3777

Fax (03) 9553 3908  
Fax (03) 9553 3908  
Fax (03) 5979 4205  
Fax (02) 9831 8822  
Fax (07) 3375 6042  
Fax (07) 3375 6042  
Fax (08) 8162 9933  
Fax (08) 9249 3778

Email: [admin@rydell.com.au](mailto:admin@rydell.com.au)  
Email: [salesvic@rydell.com.au](mailto:salesvic@rydell.com.au)  
Email: [david.bence@rydell.com.au](mailto:david.bence@rydell.com.au)  
Email: [salesnsw@rydell.com.au](mailto:salesnsw@rydell.com.au)  
Email: [salesqld@rydell.com.au](mailto:salesqld@rydell.com.au)  
Email: [salessa@rydell.com.au](mailto:salessa@rydell.com.au)  
Email: [saleswa@rydell.com.au](mailto:saleswa@rydell.com.au)

**Austria**

T +43 171728 133  
[sales@ammeraalbeltech.de](mailto:sales@ammeraalbeltech.de)  
[www.ammeraalbeltech.at](http://www.ammeraalbeltech.at)

**Belgium**

T +32 2 466 0300  
[salesgb@ammeraalbeltech.be](mailto:salesgb@ammeraalbeltech.be)  
[www.ammeraalbeltech.be](http://www.ammeraalbeltech.be)

**Canada**

T +1 905 890 1311  
[info@ammeraalbeltech.ca](mailto:info@ammeraalbeltech.ca)  
[www.ammeraalbeltech.ca](http://www.ammeraalbeltech.ca)

**Chile**

T +56 233 12900  
[ventas@ammeraalbeltech.cl](mailto:ventas@ammeraalbeltech.cl)  
[www.ammeraalbeltech.cl](http://www.ammeraalbeltech.cl)

**China**

T +86 21 5280 6810  
[info@ammeraalbeltech.com.cn](mailto:info@ammeraalbeltech.com.cn)  
[www.ammeraalbeltech.com.cn](http://www.ammeraalbeltech.com.cn)

**Czech Republic**

T +420 567 117 211  
[prodej@ammeraalbeltech.cz](mailto:prodej@ammeraalbeltech.cz)  
[www.ammeraalbeltech.cz](http://www.ammeraalbeltech.cz)

**Denmark**

T + 45 75 72 31 00  
[admin@unichains.com](mailto:admin@unichains.com)  
[www.unichains.com](http://www.unichains.com)

**Finland**

T +358 207 911 400  
[info@ammeraalbeltech.fi](mailto:info@ammeraalbeltech.fi)  
[www.ammeraalbeltech.fi](http://www.ammeraalbeltech.fi)

**France**

T +33 3 20 90 36 00  
[client@ammeraalbeltech.fr](mailto:client@ammeraalbeltech.fr)  
[www.ammeraalbeltech.fr](http://www.ammeraalbeltech.fr)

**Germany**

T +49 4152 937-0  
[sales@ammeraalbeltech.de](mailto:sales@ammeraalbeltech.de)  
[www.ammeraalbeltech.de](http://www.ammeraalbeltech.de)

**Hungary**

T +36 30 311 6099  
[info@ammeraalbeltech.hu](mailto:info@ammeraalbeltech.hu)  
[www.ammeraalbeltech.hu](http://www.ammeraalbeltech.hu)

**India**

T +91 44 265 34 244  
[info@ammeraalbeltech.net.in](mailto:info@ammeraalbeltech.net.in)  
[www.ammeraalbeltech.com](http://www.ammeraalbeltech.com)

**Italy**

T +39 051 660 60 06  
[info@ammeraalbeltech.it](mailto:info@ammeraalbeltech.it)  
[www.ammeraalbeltech.it](http://www.ammeraalbeltech.it)

**Luxembourg**

T +352 26 48 38 56  
[sales@ammeraal-beltech.lu](mailto:sales@ammeraal-beltech.lu)  
[www.ammeraal-beltech.lu](http://www.ammeraal-beltech.lu)

**Malaysia**

T +60 3 806 188 49  
[sales.kl@ammeraalbeltech.my](mailto:sales.kl@ammeraalbeltech.my)  
[www.ammeraalbeltech.com](http://www.ammeraalbeltech.com)

**Netherlands**

T +31 72 57 51212  
[infol@ammeraalbeltech.com](mailto:infol@ammeraalbeltech.com)  
[www.ammeraalbeltech.nl](http://www.ammeraalbeltech.nl)

**Poland**

T +48 32 44 77 179  
[biuro@ammeraalbeltech.com](mailto:biuro@ammeraalbeltech.com)  
[www.ammeraalbeltech.com](http://www.ammeraalbeltech.com)

**Portugal**

T +351 22 947 94 40  
[geral@ammeraalbeltech.pt](mailto:geral@ammeraalbeltech.pt)  
[www.ammeraalbeltech.pt](http://www.ammeraalbeltech.pt)

**Singapore**

T +65 62739767  
[sales@ammeraalbeltech.sg](mailto:sales@ammeraalbeltech.sg)  
[www.ammeraalbeltech.com](http://www.ammeraalbeltech.com)

**Slovakia**

T +421 2 55648541-2  
[predaj@ammeraalbeltech.sk](mailto:predaj@ammeraalbeltech.sk)  
[www.ammeraalbeltech.sk](http://www.ammeraalbeltech.sk)

**South Korea**

T +82 31 448 3613-7  
[amel@ammeraalbeltech.co.kr](mailto:amel@ammeraalbeltech.co.kr)  
[www.ammeraalbeltech.co.kr](http://www.ammeraalbeltech.co.kr)

**Spain**

T +34 93 718 3054  
[ventas@ammeraalbeltech.es](mailto:ventas@ammeraalbeltech.es)  
[www.ammeraalbeltech.es](http://www.ammeraalbeltech.es)

**Sweden**

T +46 44 780 3010  
[info@ammeraalbeltech.se](mailto:info@ammeraalbeltech.se)  
[www.ammeraalbeltech.se](http://www.ammeraalbeltech.se)

**Switzerland**

T +41 55 2253 535  
[info@ammeraalbeltech.ch](mailto:info@ammeraalbeltech.ch)  
[www.ammeraalbeltech.ch](http://www.ammeraalbeltech.ch)

**Thailand**

T +66 2 902 2604-13  
[sales@ammeraalbeltech.th.com](mailto:sales@ammeraalbeltech.th.com)  
[www.ammeraalbeltech.com](http://www.ammeraalbeltech.com)

**United Kingdom**

T +44 1992 500550  
[sales@ammeraalbeltech.co.uk](mailto:sales@ammeraalbeltech.co.uk)  
[www.ammeraalbeltech.co.uk](http://www.ammeraalbeltech.co.uk)

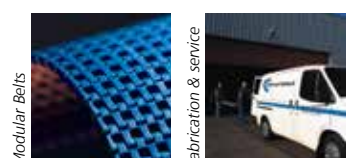
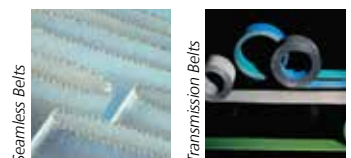
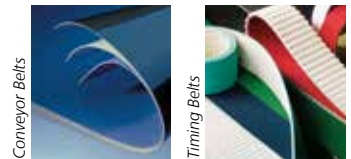
**United States**

T +1 847 673 6720  
[info@ammeraalbeltechusa.com](mailto:info@ammeraalbeltechusa.com)  
[www.ammeraal-beltechusa.com](http://www.ammeraal-beltechusa.com)

**Vietnam**

T +84 8 376 562 05  
[dmh@ammeraalbeltech.com.vn](mailto:dmh@ammeraalbeltech.com.vn)  
[www.ammeraalbeltech.com.vn](http://www.ammeraalbeltech.com.vn)

**Expert advice, quality solutions  
and local service  
for all your belting needs**



**Global Headquarters:**  
**Ammeraal Beltech Holding B.V.**  
P.O. Box 38  
1700 AA Heerhugowaard  
The Netherlands

T +31 72 575 1212  
F +31 72 571 6455

[info@ammeraalbeltech.com](mailto:info@ammeraalbeltech.com)  
[www.ammeraalbeltech.com](http://www.ammeraalbeltech.com)

... and 150 service contacts more on [www.ammeraalbeltech.com](http://www.ammeraalbeltech.com)