

# Permaline

## Food Grade Printed Belts



As a leading manufacturer of process and conveyor belting for the food industry, Ammeraal Beltech has made food production hygiene a focus of our business. Concentrating on this area, an innovative system has been developed to prevent pollution caused by marking ink: Permaline Food Grade printed belts.

Permaline printed belts allow for any drawing, in any colour or shape, without restrictions. Even full-colour photographs can be printed on the belt surface. The final top cover finish may be glossy or matte. The result is a complete Food Grade belt, a safe part of a food production line – complying with EC 1935/2004, EU 10/2011 and FDA standards.

#### Typical applications

- Industrial bakeries
- Pizza topping lines
- Packaging lines
- Check-out counters
- Any situation where an image is required on the belt



Ammeraal Beltech  
member European  
Hygienic Engineering  
& Design Group



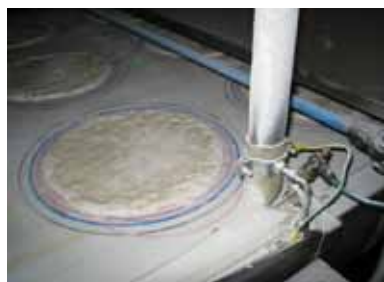
Food Grade belts  
comply with  
EC 1935/2004,  
EU 10/2011 and  
FDA standards

# Innovation & Service in Belting

## Technology

In pizza topping lines, positioning of bakery products, depositors and dosing equipment, belts are often marked to indicate the correct position of the food products for further processing. The markings on these belts are usually printed in ink, which can leave stains on the food product under the influence of oils and ingredients.

Permaline printed belts are made to order with the required drawing or picture, ready to be installed on the equipment. The printed image on the belt is insensitive to wear and there is no risk that it will disappear or fade under the influence of processes or belt scrapers. The potential for contamination and discolouration of the image is completely eliminated.



Conventional markings on a process belt, subject to the influence of oil, ingredients and cleaning agents



Permaline printed belt: clear, non-fading markings that have the same resistance as the process belt

## Benefits

*State-of-the-art hygiene* – with the Permaline solution, there is no pollution from ink of drawings transferred to food products. Markings are not affected by cleaning agents.

*Food safety* – fully Food Grade, complies with EC 1935/2004, EU 10/2011 and FDA standards.

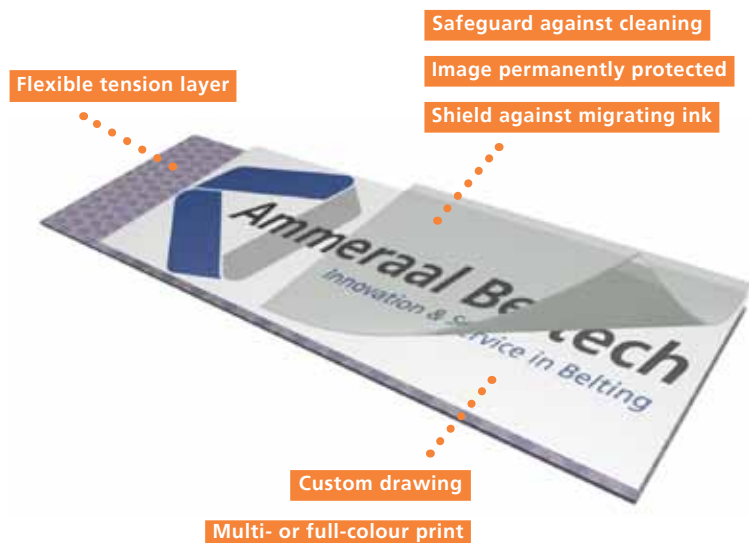
*Time-saving* – turnkey solution; Permaline Belts can be supplied endless or prepared to be spliced on-site without the time-consuming difficulty to add drawings on the right pitch in the splice area.

*No colour restrictions* – Permaline Belts can be provided with multi-colour drawings on white, blue or black basic cover colour. Full-colour pictures are also possible.

*Scraper-friendly* – custom images are not susceptible to damage or fading from the use of a belt scraper.

*Innovation* – the Permaline printed belt solution represents the latest technology in belting.

*Quality* – food products processed on Permaline printed belts will have the proper size and quality as expected by the final consumers.



[www.rydell.com.au](http://www.rydell.com.au)

**VICTORIA**

**NEW SOUTH WALES**  
**QUEENSLAND**  
**SOUTH AUSTRALIA**  
**WESTERN AUSTRALIA**

HEAD OFFICE 148-150 Cochrane Road Moorabbin 3189 Victoria  
BRANCH Factory 16/24 Kanowna Street Hastings 3915 Victoria  
BRANCH 22 Binney Road Kings Park 2148 New South Wales  
BRANCH 12 Machinery Street Darra 4076 Queensland  
BRANCH 17-19 Churchill Road North Dry Creek 5094 Sth Aust  
BRANCH Unit 3/75 Crockier Drive Malaga 6090 West Aust

Phone (03) 9555 7922  
Phone (03) 5979 4447  
Phone (02) 9831 7300  
Phone (07) 3375 6211  
Phone (08) 8162 9922  
Phone (08) 9249 3777

Fax (03) 9553 3908  
Fax (03) 5979 4205  
Fax (02) 9831 8822  
Fax (07) 3375 6042  
Fax (08) 8162 9933  
Fax (08) 9249 3778

Email: [salesvic@rydell.com.au](mailto:salesvic@rydell.com.au)  
Email: [salesnsw@rydell.com.au](mailto:salesnsw@rydell.com.au)  
Email: [salesqld@rydell.com.au](mailto:salesqld@rydell.com.au)  
Email: [salessa@rydell.com.au](mailto:salessa@rydell.com.au)  
Email: [saleswa@rydell.com.au](mailto:saleswa@rydell.com.au)