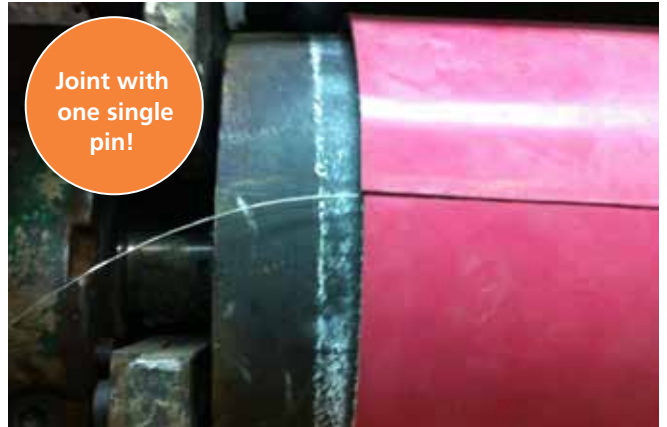




ZipLink® Belts

Win Your Race at the Pit Stop!

ZipLink® - Increase your production time



Ammeraal Beltech is a leading manufacturer of process and conveyor belting with an established reputation for developing innovative solutions for belting applications.

Working closely with OEMs and end users Ammeraal Beltech has developed a range of ZipLink® Belts: a special design link fabric in combination with top covers giving superior performance. Main benefit is the striking increase of your production time.



ZipLink® Belts:

- **Minimize replacement time on site by 75%**
- Eliminate splice failures
- Eliminate damages to transported products
- Eliminate damages to machine parts (drums, slider beds) due to mechanical fasteners

ZipLink®, ideal for whatever application where belt replacement time is an issue, for example:

- » **Cardboard industry**
bridge raising and bridge, slitting, cross cutting, box folding, stacking, delivery
- » **Wood processing**
grinding, sanding, polishing, braking, sawing, painting, pre-compressing
- » **Tyre industry**
uncured rubber transport, general process and handling
- » **Airports & logistics**
scanning, check in, collectors, inclined transport, airplane loading
- » **Tobacco processing**
conditioning, weighing, transport
- » **Magnetic conveyors**
- » **Food applications**



Belts that join instantly

Easy, no specific training required

| | | |
|---|---|----------------------------------|
| AMMERAAL BELTECH ZIPLINK® BELT RANGE | <ul style="list-style-type: none"> » Shortest production downtime » Reduced maintenance time and cost » Extended belt service life » Ideal for difficult locations | Increased production time |
| | <ul style="list-style-type: none"> » Protects both product and conveyor from being damaged » Extra high stability allows for easier tracking » Safe on-site installation, no heavy equipment needed » No loss of strength in the joint area | Operational safety |
| | <ul style="list-style-type: none"> » Low friction bottom version helps reduce energy consumption due to the absence of splice areas | Less energy consumption |
| | <ul style="list-style-type: none"> » Strongest in-house splicing; no outside fitters required » No need for any special tools or presses » Possible repair of damaged belt sections | Economical use |
| | <ul style="list-style-type: none"> » Choice of top cover materials tuned to the application » ZipLink® Belts have a proven track record worldwide | Proven technology |

ZipLink® is an innovative belt range which is specially designed to offer benefits in a variety of different industries. Quick and simple installation or repair help to lower costs and reduce downtime. The design allows for repair or replacement of just small sections of the belt.



The largest range of covers ... and we can make your specific belt on demand

Selection of Range ZipLink® Belts

| Article no. | Nomenclature | | | | | | | Thickness [mm] | Hardness top cover [shore] | Min. pulley dia. flexing [mm] | Min. pulley dia. back flexing [mm] | Temperature min. [°C] | Temperature max. [°C] |
|-------------|--------------|-------|------|------|----------|---------|----------------|----------------|----------------------------|-------------------------------|------------------------------------|-----------------------|-----------------------|
| 514927 | Elastoflex | EZP | 10/1 | 0 + | A19 | beige | / 50 Sh | 9.0 | 50A | 100 | 120 | -15 | 80 |
| 560165 | Fabric | EZP | 10/1 | 01 + | 0 | black | | 3.6 | - | 64 | 100 | -40 | 121 |
| 583040 | Fabric | EZP/C | 10/2 | 0 + | 0 | white | FG | 3.9 | - | 80 | 80 | -15 | 90 |
| 583010 | Flexam | EZP | 10/1 | 0 + | 10 | black | M2 FR | 3.5 | 80A | 50 | 80 | -15 | 80 |
| 583050 | Flexam | EZP | 10/1 | 0 + | A20 | black | FR | 8.4 | 65A | 100 | 150 | -15 | 80 |
| 583055 | Flexam | EZP | 10/1 | 0 + | A66 | black | FR | 8.8 | 65A | 100 | 150 | -15 | 80 |
| 583056 | Felt | EZP | 10/1 | 0 + | FE | black | | 4.3 | - | 100 | 150 | -10 | 100 |
| 560124 | Nitrile | EZP | 10/1 | 01 + | C57 | white | FG | 4.0 | 60A | 75 | 100 | -18 | 121 |
| 560119 | Nitrile | EZP | 10/1 | 01 + | 08 | white | CR FG HR | 3.4 | 60A | 75 | 100 | -18 | 121 |
| 560121 | Nitrile | EZP | 10/1 | 01 + | C37 | brown | | 6.3 | 50A | 75 | 125 | -18 | 121 |
| 560141 | Nitrile BX | EZP | 10/1 | 0 + | 05 | blue | FG | 3.4 | 75A | 50 | 50 | -18 | 121 |
| 560136 | Nitrile BX | EZP | 10/1 | 0 + | C37 (NI) | blue | | 6.2 | 70A | 75 | 120 | -18 | 121 |
| 560120 | Nitrile BX | EZP | 10/1 | 01 + | 05 | blue | | 2.6 | 70A | 50 | 75 | -18 | 121 |
| 560110 | Nitrile BX | EZP | 10/1 | 01 + | C37 (NI) | blue | | 6.3 | 70A | 75 | 120 | -18 | 121 |
| 583020 | Nonex | EZP | 10/1 | 0 + | 10 | white | FG | 3.5 | 65A | 50 | 80 | -15 | 80 |
| 560122 | NR | EZP | 10/1 | 01 + | 32 | red | | 5.1 | 40A | 100 | 125 | -40 | 121 |
| 560111 | NR | EZP | 10/1 | 01 + | C37 | natural | CR | 6.3 | 40A | 75 | 100 | -40 | 121 |
| 560116 | NR | EZP | 10/1 | 01 + | C52 | tan | CR | 7.2 | 45A | 100 | 175 | -40 | 121 |
| 560162 | Silam | EZP | 10/1 | 01 + | 05 | white | CR HD FG HR OR | 2.3 | - | 76 | 152 | -60 | 200 |
| 560173 | Silam | EZP | 10/1 | 01 + | 03 | red | CR HD HR OR | 5.3 | - | 101 | 101 | -40 | 176 |
| 560191 | Teflon | EZP | 10/1 | 0 + | 01 | grey | FG HR | 3.4 | - | 75 | - | -18 | 150 |
| 514615 | Pletex | EZP | 10/1 | 0 + | 30 | red | | 6.0 | 35A | 60 | 80 | -15 | 80 |
| 560127 | SBR | EZP | 10/1 | 0 + | C37 | black | | 5.3 | 45A | 75 | 100 | -40 | 121 |
| 560129 | SBR | EZP | 10/1 | 01 + | C37 | black | CR | 6.3 | 45A | 75 | 110 | -40 | 121 |

CR = cold resistant, FG = foodgrade, FR = flame retardant, HR = heat resistant, HD = hydrolysis resistant, OR = oil resistant

Easy replacement of the complete belt or of small sections in the event of damage.



Achieve considerable cost savings: easy to use tooling kit and no specialised outside fitters required.

ZipLink® is a breakthrough in belting design that combines cover materials with a structured link mesh that can be easily spliced at any length into a continuous belt without the need for special tools, presses or other equipment.

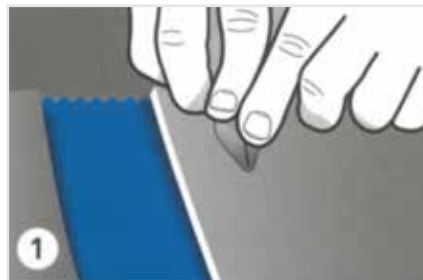
The ZipLink® construction eliminates points of weakness because there is no loss of strength in the splice area, making the belts stronger so they last longer than belts of other seamed or fused materials.

ZipLink® provides long life and flexibility for multiple applications. The belts can easily and quickly be changed without accruing significant downtime or expensive overtime. After converting to ZipLink®, time and personnel required to change belts may be reduced by more than half.

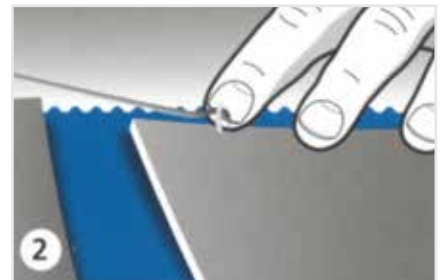


Complete toolbox available, including instruction CD

Working instruction



Score the back and lubricate the pin.



Pop the pin out at 1.5 cm from the edge.



Gently pull the pin out using pliers.



Carefully cut the top cover.



Press the ends back together firmly.



Pass the wire through and cut the excess.

Local Contacts



Rydell Industrial (Belting) Co

www.rydell.com.au

VICTORIA

HEAD OFFICE
BRANCH
BRANCH
BRANCH
BRANCH

148-150 Cochranes Road Moorabbin 3189 Victoria
Factory 16/24 Kanowna Street Hastings 3915 Victoria
22 Binney Road Kings Park 2148 New South Wales
12 Machinery Street Darra 4076 Queensland
17-19 Churchill Road North Dry Creek 5094 Sth Aust
Unit 3/75 Crocker Drive Malaga 6090 West Aust

Phone (03) 9555 7922
Phone (03) 5979 4447
Phone (02) 9831 7300
Phone (07) 3375 6211
Phone (08) 8162 9922
Phone (08) 9249 3777

Fax (03) 9553 3908
Fax (03) 5979 4205
Fax (02) 9831 8822
Fax (07) 3375 6042
Fax (08) 8162 9933
Fax (08) 9249 3778

Email: salesvic@rydell.com.au
Email: salesnsw@rydell.com.au
Email: salesqld@rydell.com.au
Email: salessa@rydell.com.au
Email: saleswa@rydell.com.au

NEW SOUTH WALES
QUEENSLAND
SOUTH AUSTRALIA
WESTERN AUSTRALIA

Austria

T +43 171728 133
sales@ammeraalbeltech.de
www.ammeraalbeltech.at

Belgium

T +32 2 466 0300
salesgb@ammeraalbeltech.be
www.ammeraalbeltech.be

Canada

T +1 905 890 1311
info@ammeraalbeltech.ca
www.ammeraalbeltech.ca

Chile

T +56 233 12900
ventas@ammeraalbeltech.cl
www.ammeraalbeltech.cl

China

T +86 21 5280 6810
info@ammeraalbeltech.com.cn
www.ammeraalbeltech.com.cn

Czech Republic

T +420 567 117 211
prodej@ammeraalbeltech.cz
www.ammeraalbeltech.cz

Denmark

T +45 75 72 31 00
admin@unichains.com
www.unichains.com

Finland

T +358 207 911 400
info@ammeraalbeltech.fi
www.ammeraalbeltech.fi

France

T +33 3 20 90 36 00
client@ammeraalbeltech.fr
www.ammeraalbeltech.fr

Germany

T +49 4152 937-0
sales@ammeraalbeltech.de
www.ammeraalbeltech.de

Hungary

T +36 30 311 6099
info@ammeraalbeltech.hu
www.ammeraalbeltech.hu

India

T +91 44 265 34 244
info@ammeraalbeltech.net.in
www.ammeraalbeltech.com

Italy

T +39 051 660 60 06
info@ammeraalbeltech.it
www.ammeraalbeltech.it

Luxembourg

T +352 26 48 38 56
sales@ammeraal-beltech.lu
www.ammeraal-beltech.lu

Malaysia

T +60 3 806 188 49
sales.kl@ammeraalbeltech.my
www.ammeraalbeltech.com

Netherlands

T +31 72 57 51212
infol@ammeraalbeltech.com
www.ammeraalbeltech.nl

Poland

T +48 32 44 77 179
biuro@ammeraalbeltech.com
www.ammeraalbeltech.com

Portugal

T +351 22 947 94 40
geral@ammeraalbeltech.pt
www.ammeraalbeltech.pt

Singapore

T +65 62739767
sales@ammeraalbeltech.sg
www.ammeraalbeltech.com

Slovakia

T +421 2 55648541-2
predaj@ammeraalbeltech.sk
www.ammeraalbeltech.sk

South Korea

T +82 31 448 3613-7
amel@ammeraalbeltech.co.kr
www.ammeraalbeltech.co.kr

Spain

T +34 93 718 3054
ventas@ammeraalbeltech.es
www.ammeraalbeltech.es

Sweden

T +46 44 780 3010
info@ammeraalbeltech.se
www.ammeraalbeltech.se

Switzerland

T +41 55 2253 535
info@ammeraalbeltech.ch
www.ammeraalbeltech.ch

Thailand

T +66 2 902 2604-13
sales@ammeraalbeltech.th.com
www.ammeraalbeltech.com

United Kingdom

T +44 1992 500550
sales@ammeraalbeltech.co.uk
www.ammeraalbeltech.co.uk

United States

T +1 847 673 6720
info@ammeraalbeltechusa.com
www.ammeraal-beltechusa.com

Vietnam

T +84 8 376 562 05
dmh@ammeraalbeltech.com.vn
www.ammeraalbeltech.com.vn

Solid advice
For all your belting needs
Local stock & service



Conveyor Belts



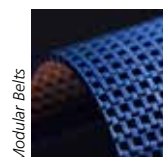
Timing Belts



Seamless Belts



Transmission Belts



Modular Belts



Fabrication & service

International Head Office:

Ammeraal Beltech Holding B.V.

Handelsstraat 1
P.O. Box 38
1700 AA Heerhugowaard
The Netherlands

T +31 72 5751212
F +31 72 5716455
info@ammeraalbeltech.com
www.ammeraalbeltech.com

... and 150 service contacts more on www.ammeraalbeltech.com